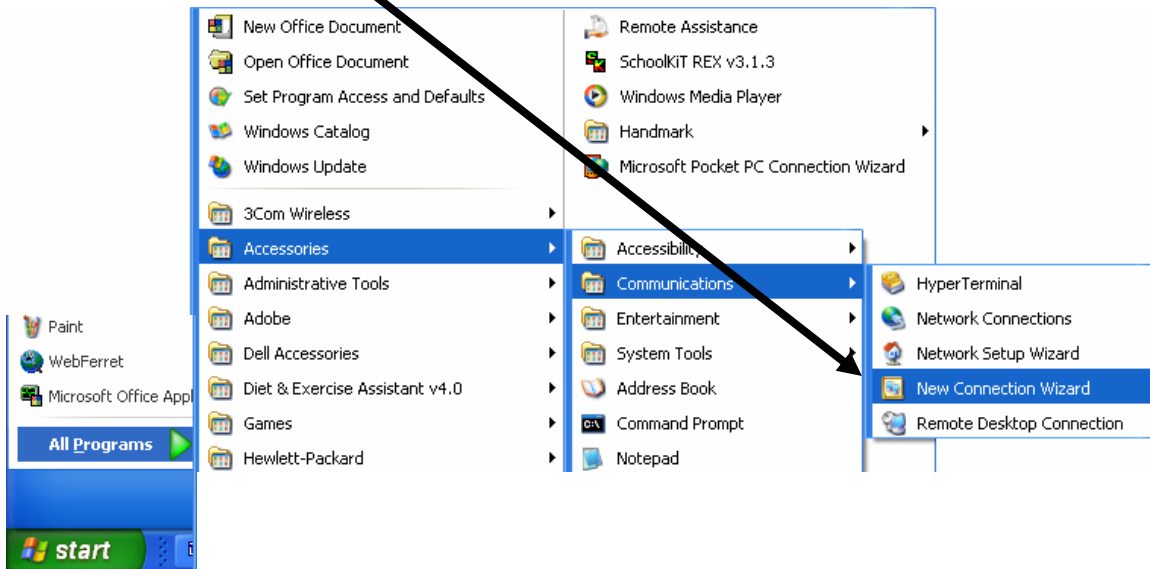


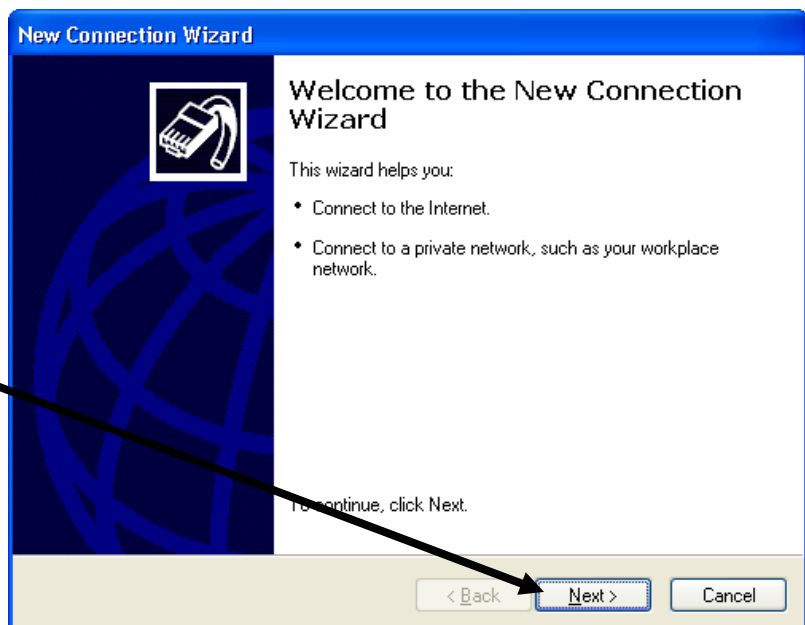
WINDOWS XP VPN Installation Instructions

Note: these instructions assume you are using a permanent connection to the Internet - either cable modem or DSL - and are on-line.

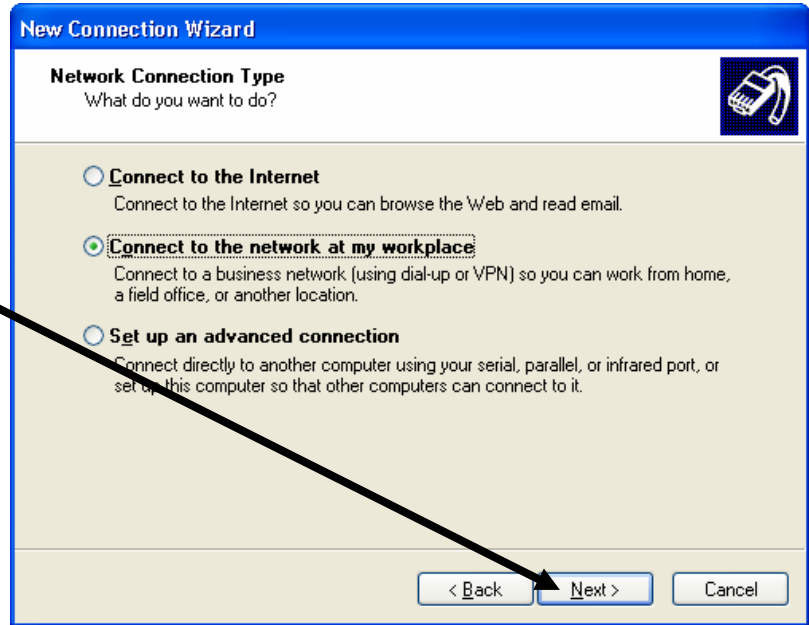
1) Click on <Start> / All Programs / Accessories / Communications / New Connection Wizard.



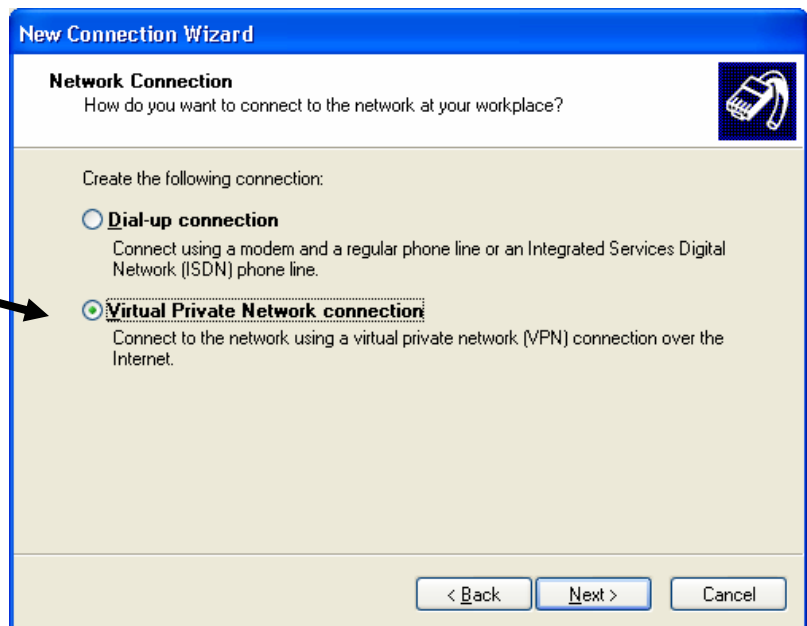
2) When the New Connection Wizard window opens, click on <Next>.



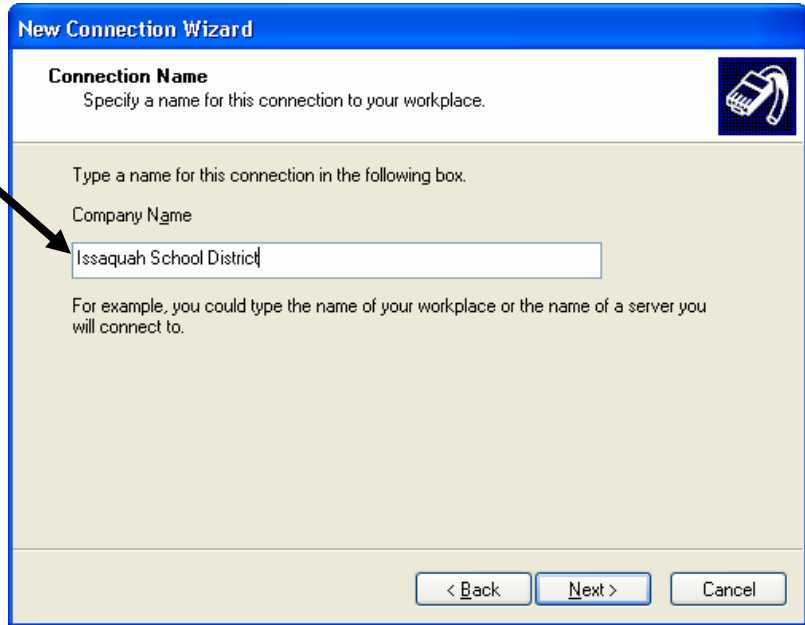
3) Click in the button next to 'Connect to the network at my workplace,' then click <Next>.



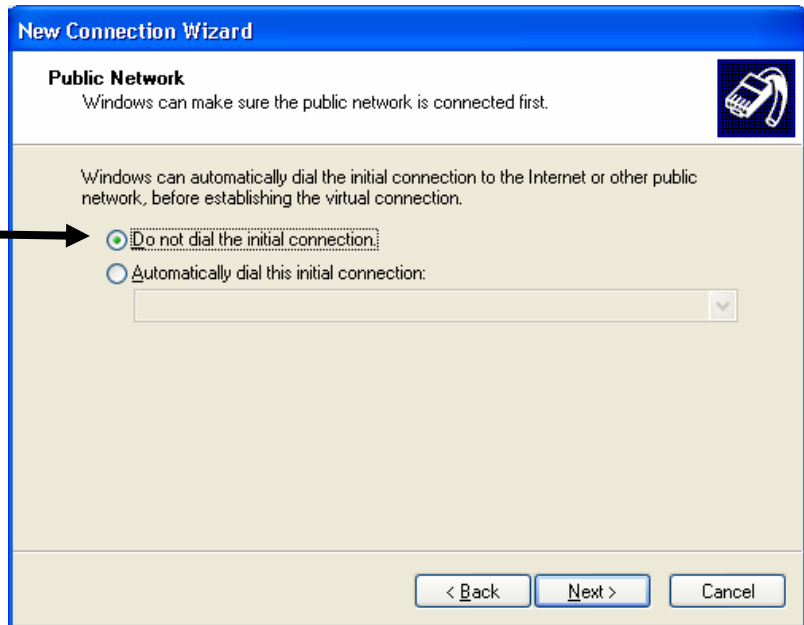
4) Click in the button next to 'Virtual Private Network connection', then click <Next>.



5) Type Issaquah School District in the box for Company Name and click <Next>.

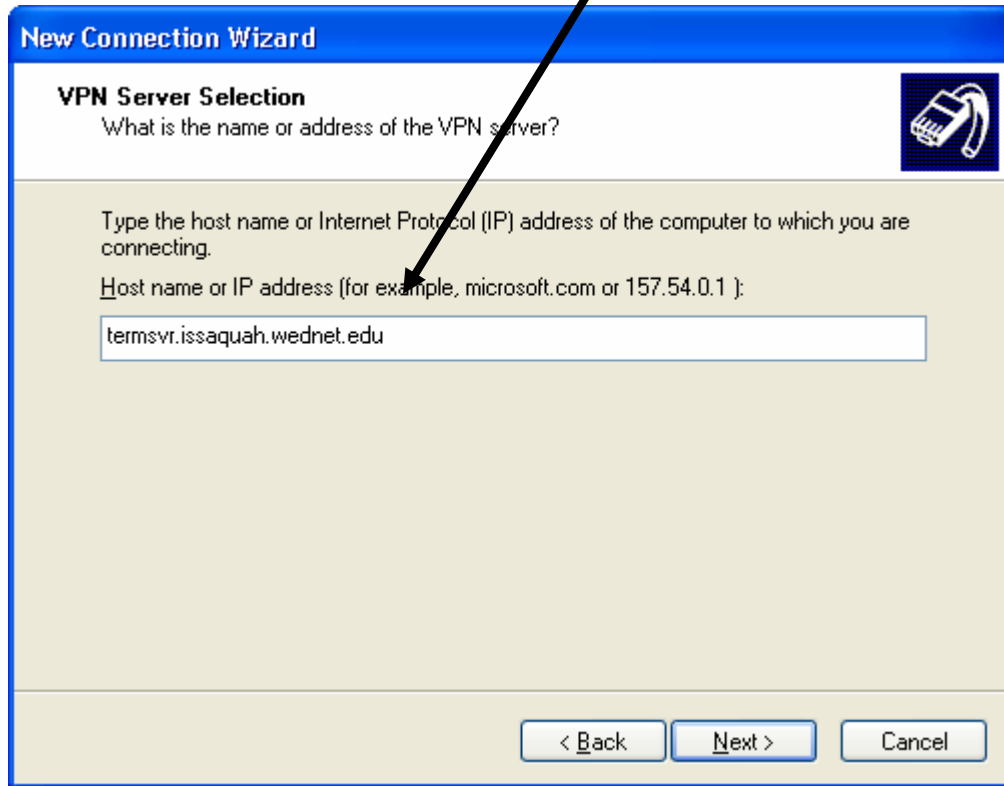


6) Click in 'Do not dial the initial connection', and click <Next>.

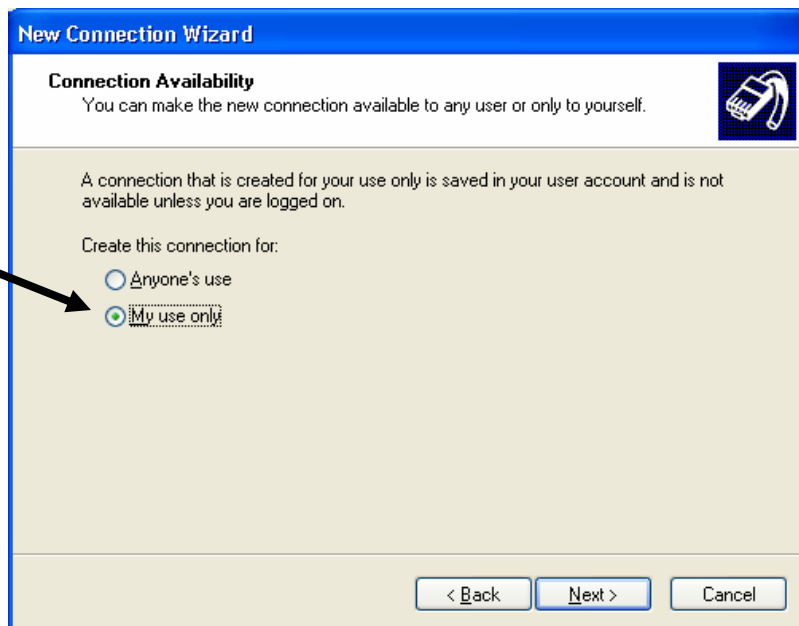


7) Type in the server name exactly as you see it here:

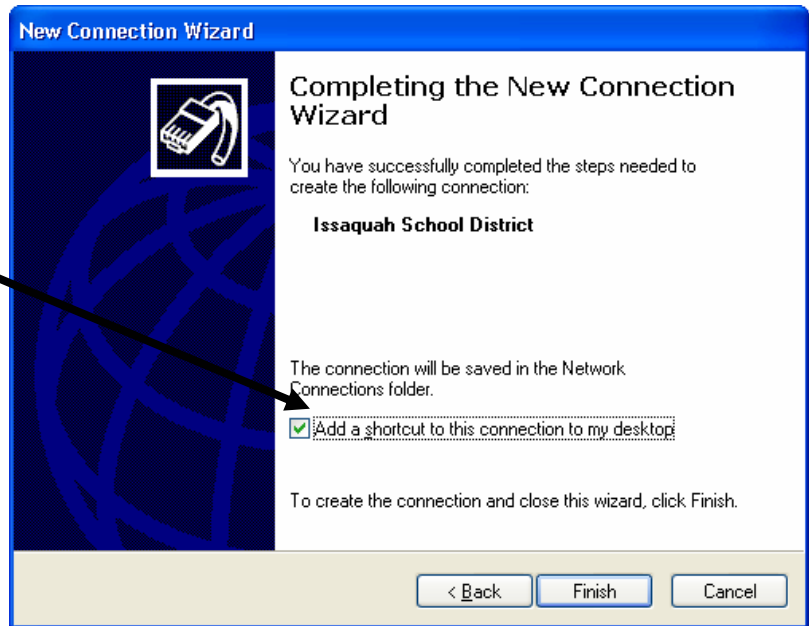
termsvr.issaquah.wednet.edu



8) Be sure the button by 'My use only', is selected and click <Next>.

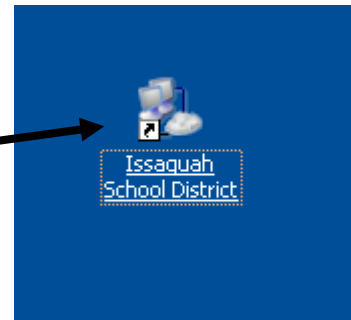


9) Click in the box to add a shortcut for the VPN to your desktop, then click <Finish>.



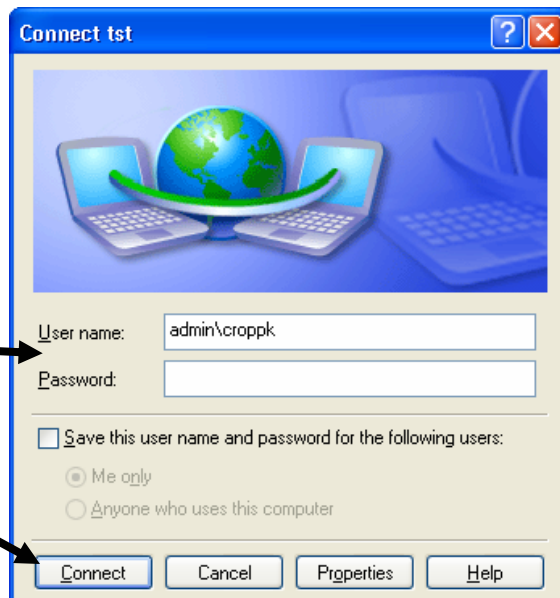
The shortcut will look like this:

10) Double-click on the icon.



11) When this 'Connect' window opens, enter your domain\name and password.

12) Click on <Connect>.

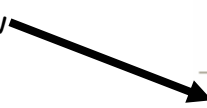


To be able to access your files, finish the process by doing the following:

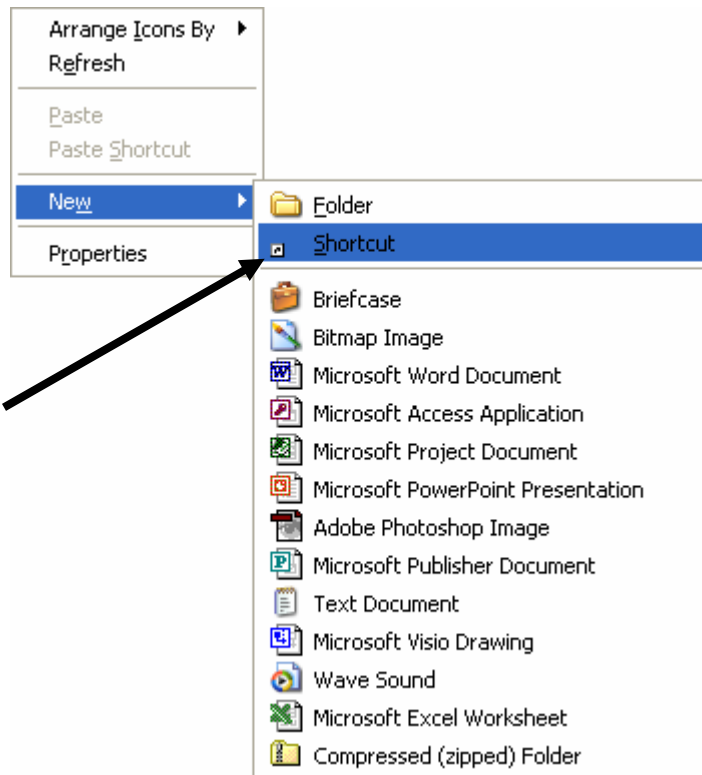
13) Right click once on the desktop. This menu will open:



14) Scroll down to New



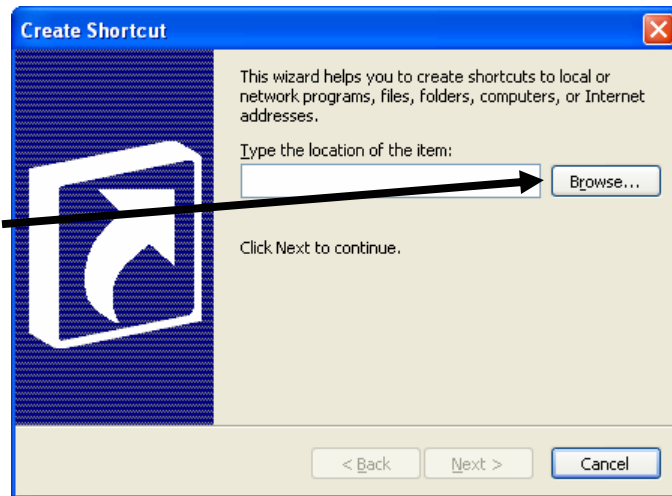
A second menu will open from New:



15) Scroll over to 'Shortcut' and click once.

This window will open:

16) You can 'Browse' to find your server folder on the network if you wish.



Or you can type in the following information in the dialog box:

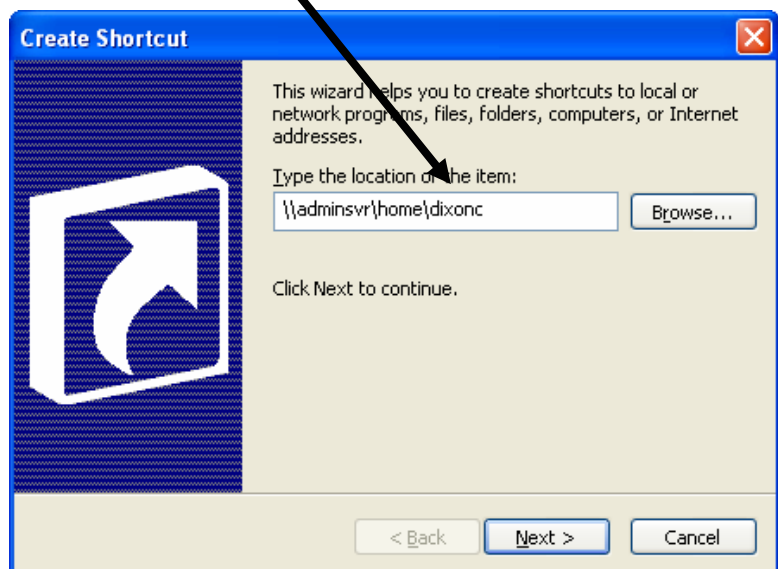
\\your server name\the main server folder containing your personal folder\your user name

Examples:

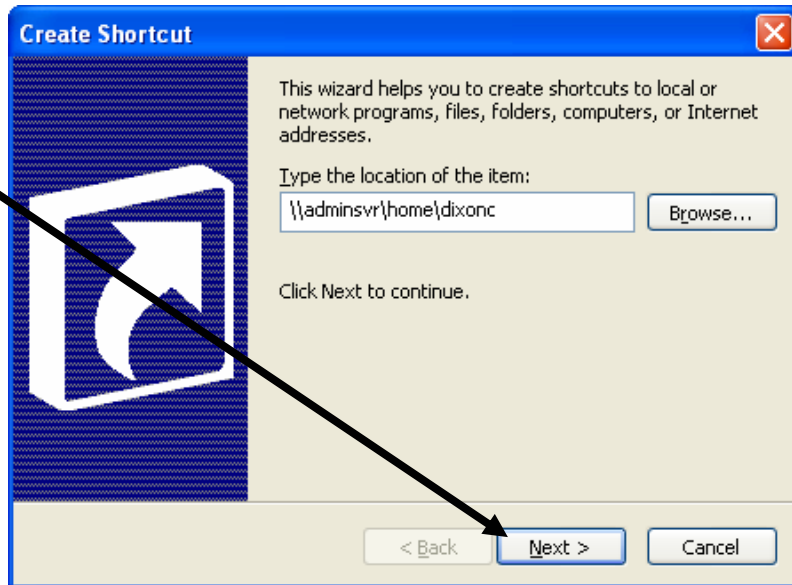
[\\adminsvr\home\dixonc](#)

[\\ihssvr\staff\pazanr](#)

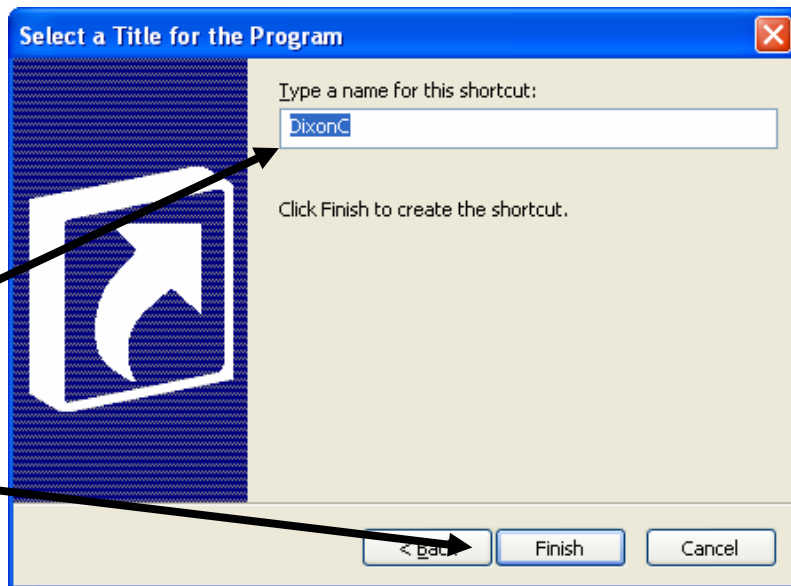
[\\clarksvr\stafffolders\wildermuthj](#)



17) Click the <Next> button.



You can leave the default name of your server folder if you like, or type in something different.



18) Click <Finish>.

The icon will look like this:

